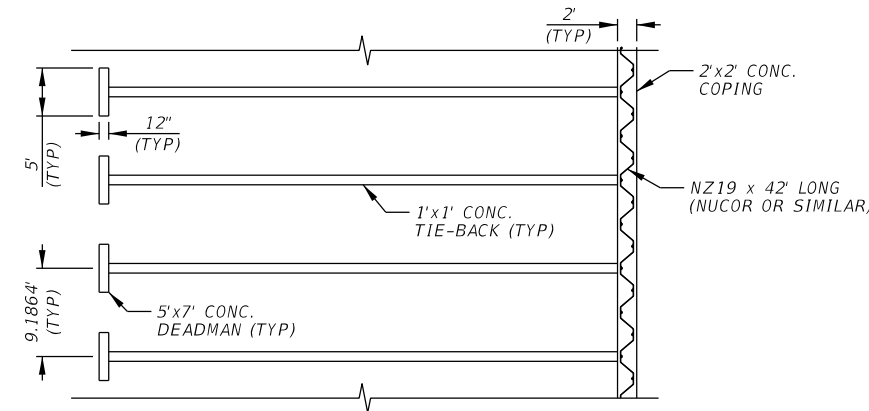
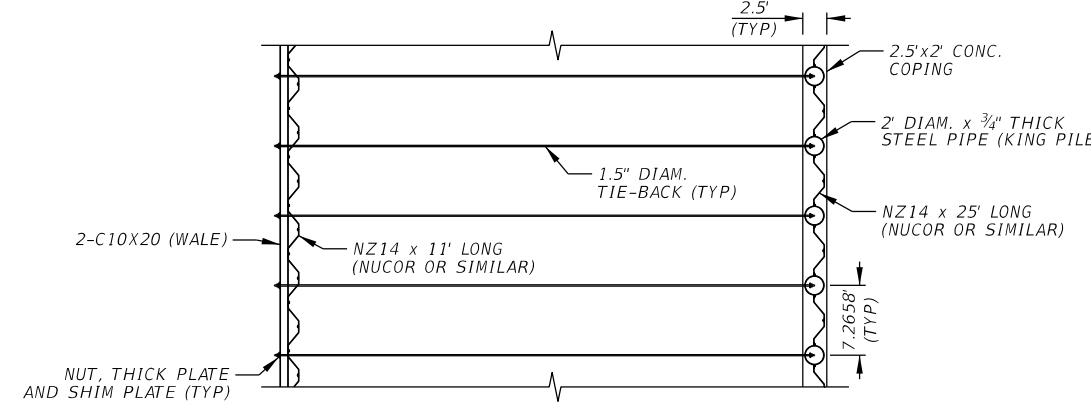


ALTERNATIVE 1 - ANCHORED WALL SHEET PILING WALL W/ DEADMAN ANCHOR



PLAN VIEW

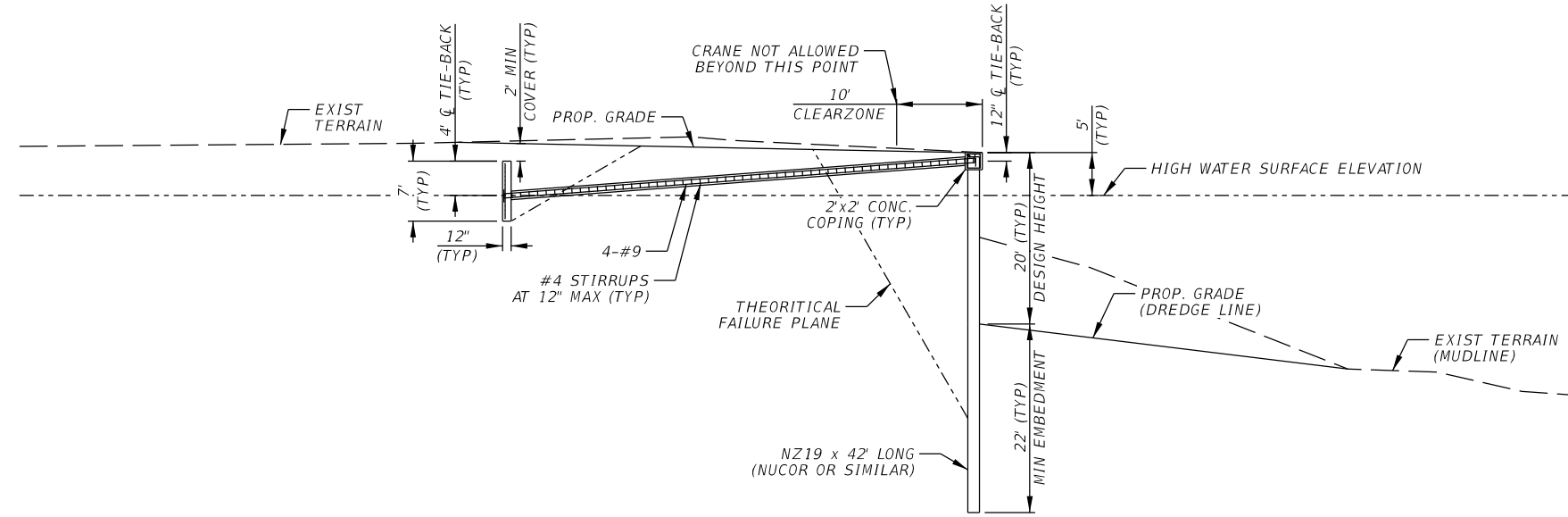
ALTERNATIVE 2 - ANCHORED WALL COMBI-WALL W/ SHEET PILING WALL ANCHOR



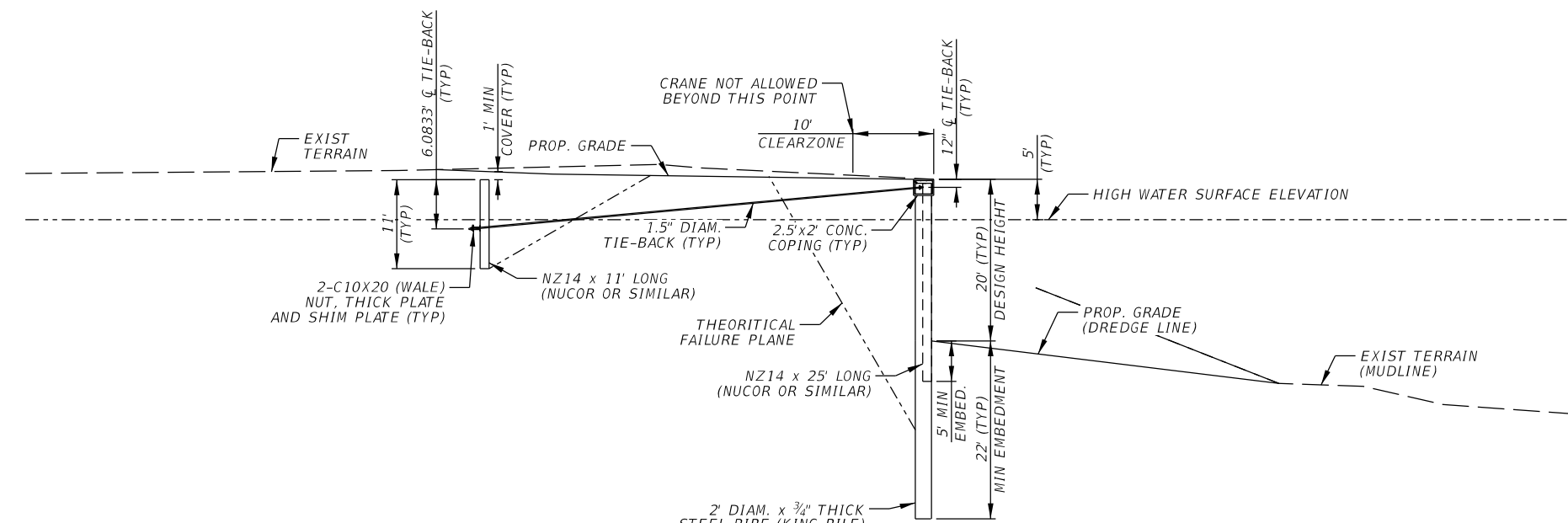
PLAN VIEW

GENERAL NOTES:
 LIVE LOAD:
 DISTRIBUTED LIVE LOAD = 1000 PSF
 MOBILE HARBE CRANE (NUMBER 6 OR SIMILAR)
 MAX. LOAD = 150 TONNE
 MAX. OUTRIGGER LOAD = 229.2 TONNE
 PAD DIMENSION = 7.8FT X 16.4FT
 MAX. PRESSURE = 3912 PSF

MATERIAL NOTES:
 PROVIDE CONCRETE FC = 4 KSI
 PROVIDE GRADE 50 STEEL
 PROVIDE GRADE 60 REINFORCING STEEL
 PROVIDE GRADE 150 THREADED BAR STEEL
 PROVIDE STEEL SHEET PILING WITH SIMILAR
 OR GREATER ELAST. SECTION MODULUS
 N214 = 25.65 IN³/FT
 N219 = 33.08 IN³/FT

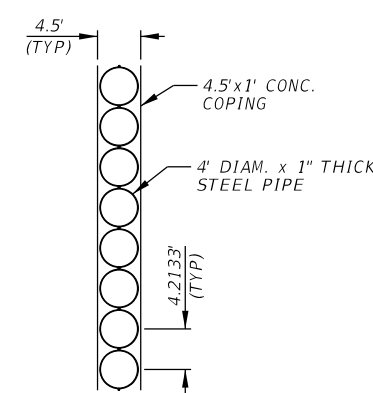


ELEVATION VIEW



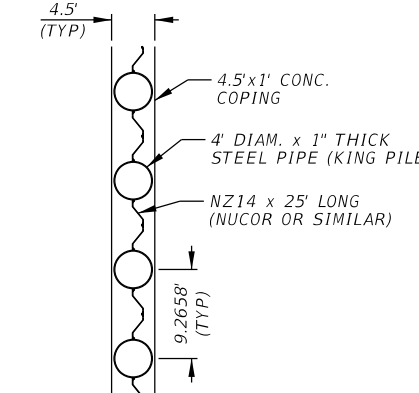
PLAN VIEW

ALTERNATIVE 3 - CANTILEVERED WALL STEEL PIPE WALL

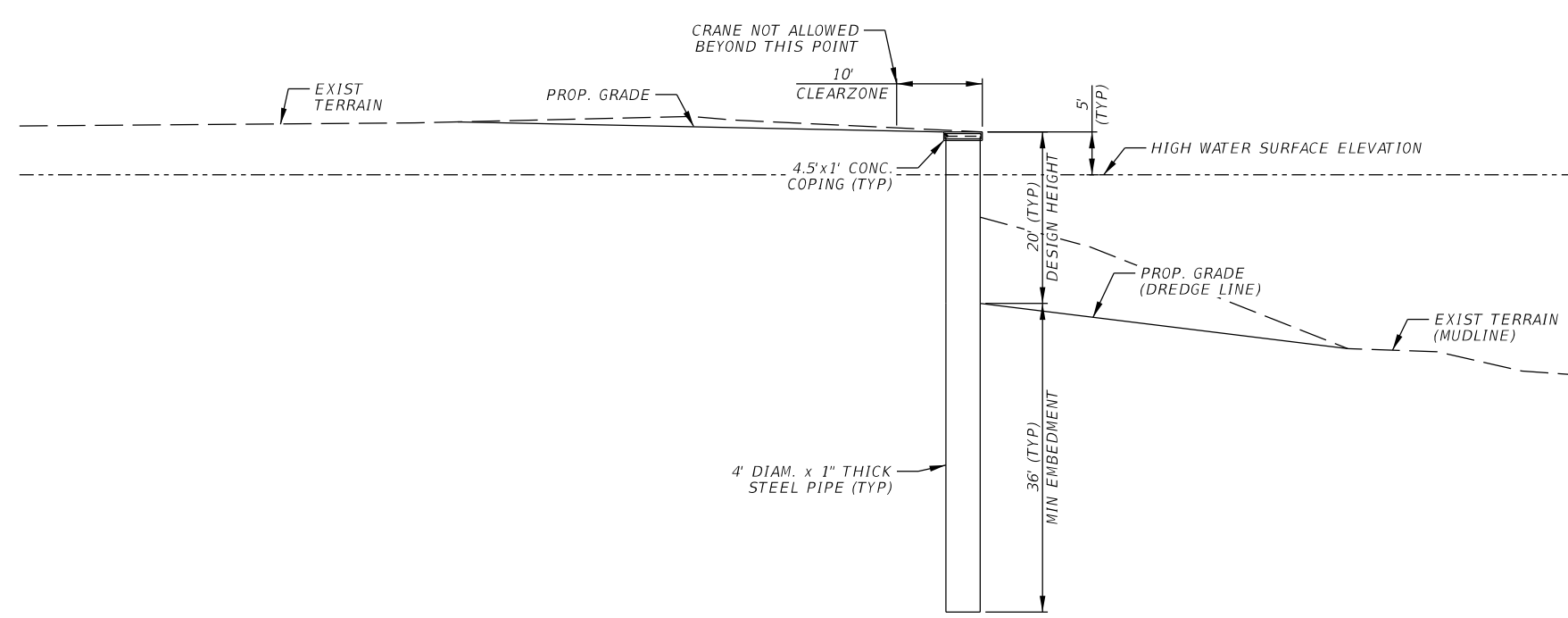


PLAN VIEW

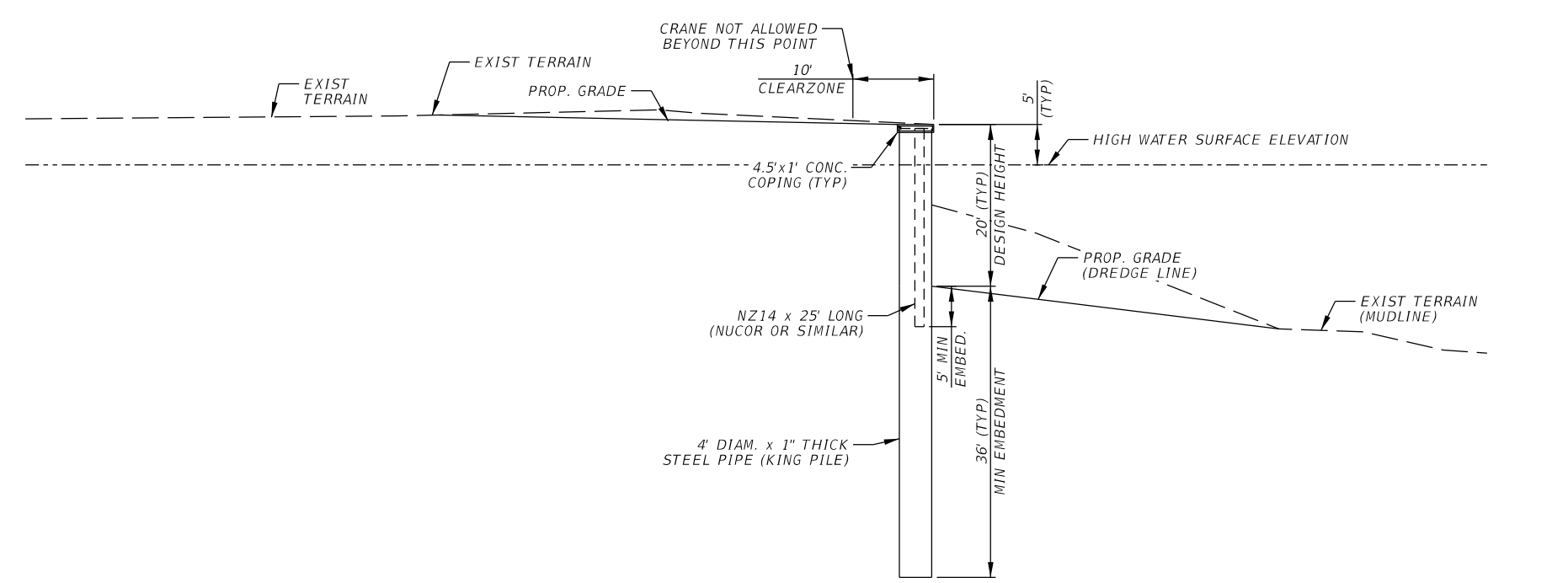
ALTERNATIVE 4 - CANTILEVERED WALL PIPE-Z COMBI WALL



PLAN VIEW



ELEVATION VIEW



ELEVATION VIEW

Millimeters

Scale For Microfilming

Inches

no.	date	by	ckd	description
-----	------	----	-----	-------------

THIS DOCUMENT IS PRELIMINARY IN NATURE AND IS NOT A FINAL, SIGNED AND SEALED DOCUMENT. NOT ISSUED FOR CONSTRUCTION



date	detailed
designed M. DASILVA	checked

PUTNAM COUNTY BULKHEAD DOCK PRELIMINARY DESIGN

project 170838	contract
drawing	rev.
sheet 1	of 1
file	sheets