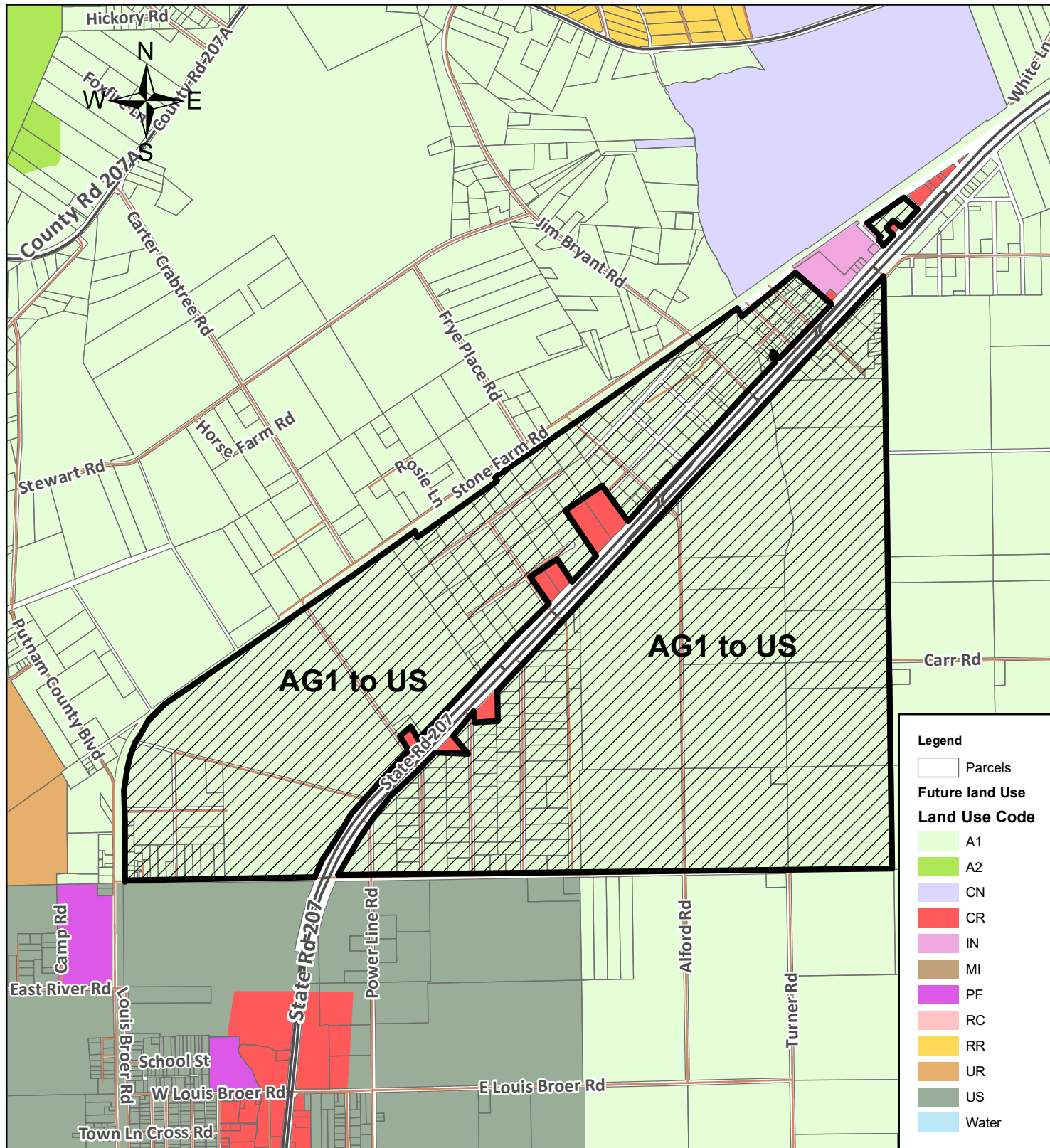
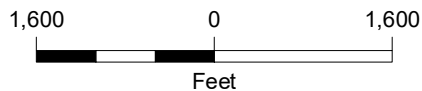


# FUTURE LAND USE CHANGES SR 207 CORRIDOR



**Legend**

- Parcels
- Future land Use**
- Land Use Code**
- A1
- A2
- CN
- CR
- IN
- MI
- PF
- RC
- RR
- UR
- US
- Water



"This map was created using digital database information which was developed from one or more local government sources within Putnam County, FL, and may include additional information from other public and private sources which may be subject to license and/or copyright. All provided Geographic Information System data is to be considered a generalized spatial representation that is subject to revisions. Maps and associated information must be accepted and used by the recipient with the understanding that the primary information sources should be consulted for verification on the information contained on these maps. As such, no warranties, expressed or implied, are given concerning the accuracy, completeness, reliability or suitability of this data for any particular use. Furthermore, this information is provided as a visual representation only and is not intended to be used as a legal or official representation of legal boundaries."

The Putnam County Board of County Commissioners joined by the county departments, together with the constitutional offices of; Clerk or the Circuit Court; Property Appraiser; Sheriff; Supervisor or Elections; and Tax Collector; assumes no liability whatsoever associated with the use or misuse of this data.

Prepared by: MDB	Checked by: N/A	Approved by:
Date: TBD	Date: N/A	Date:
Source: PUTNAM CO. PROPERTY APPRAISER, PLANNING & DEVELOPMENT		
Revisions:		
Revisions:		
Revisions:		

**PUTNAM COUNTY**

Parcel(s):

Prepared By:  
PLANNING & DEVELOPMENT SERVICES  
PUTNAM COUNTY, FLORIDA  
2021