

2010 FLORIDA BUILDING CODE, ACCESSIBILITY

Florida Building Code Accessibility (FBCA) ACCESSIBLE RAMP CONSTRUCTION

FBCA 106.1 Ramp:

A walking surface that has a running slope steeper than 1:20.

2010 FBCA 405.2 Maximum Slope:

Ramps shall have a running slope not steeper than 1:12.

FBCA 405.6 Ramp Segment Rise:

Maximum rise for ramp segment cannot exceed 30" or 30' in length.

FBCA 405.3 Cross Slope:

Landings and ramps shall have a cross slope less than 1: 48. (2%)
(Typical landing max. cross slope 60" X 2% = $1\ 3/16"$, Typical ramp max. cross slope 44" X 2% = $7/8"$)

FBCA 405.7 Landings:

Landings are required at top, bottom, and direction changes. Landings shall be not less than 60" in the direction of the path of travel.

2010FBCA 405.7.4:

Landings forming a change of direction must be 60" X 60" minimum.

FBCA 1013.1:

Guardrail must be provided where ramp surface is greater than 30" from grade. FBCA 1013.1

FBCA 1013.2 Guardrail Height:

Guardrail must be 42" minimum from walking surface.

FBCA 1013.3 Guardrail Openings:

Maximum allowed guardrail opening must not exceed 4". 2010 FBC section 1013.3.

FBCA 405.5, FBC 1010.5.1 Ramp Width:

Ramps must be 36" minimum width. Ramps parts of a "Means of Egress" shall be 44" minimum width.

FBCA 505.2 & 505.10.1 Handrail:

Handrail must be provided on both sides of the ramp and must extend 12 inches beyond the ramp surface before returning to wall, floor, or post.

FBCA 505.4 Handrail Height:

Handrails shall be installed between 34" – 38" in height when required.

FBCA 302.1 Ramp Surface:

Ramps shall be installed with a non-slip surface.

FBCA 404.2.4 & 404.3.2 Doorways:

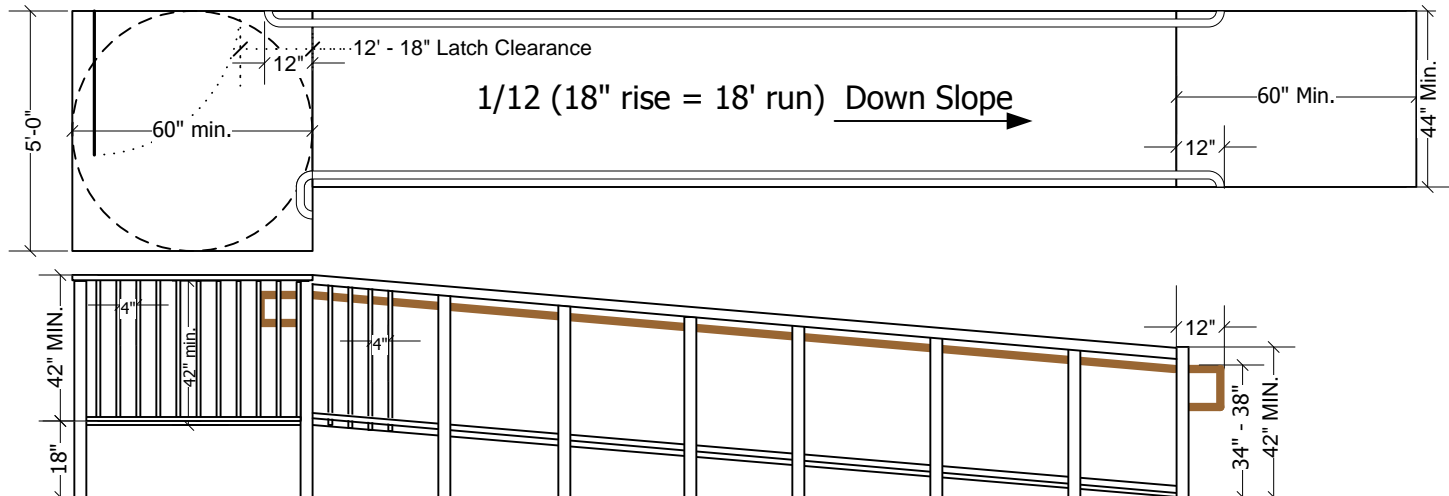
Doorways located on landings must have maneuvering clearances appropriate to the path of travel and door swing configuration.

FBCA 405.9.2 Edge Protection:

Ramps adjacent to drop offs must have edge protection preventing passage of a 4" sphere. 2010 FBCA section 405.9.2.

FBCA 405.10 Wet Conditions:

Water shall not accumulate on ramps due to design.



SCALE
1/4" = 1'